

GETTING PERSPECTIVE





DRAWING IN NATURE

Beautiful Materials Design Studio invites you to be inspired to create a landscape artwork from the perspective of Berrylaw Hill Dunfermline. Your creation will be displayed in exhibition entitled Berrylaw Perspective (curated by Nicola Atkinson and Alan Grieve) in the Andrew Carnegie Birthplace Museum.

This is part of the public artwork 'Walking in the town as if you were wandering in landscape' by Nicola Atkinson, artist of the Beautiful Materials Design Studio, takes Andrew Blair's painting as a starting point, creating a new perspective from Bruce Street as if you were wandering in a landscape.

The old studio of celebrated 19th century Dunfermline artist Andrew Blair (situated at 9 Bruce Street) provides the perfect setting for displaying one of his landscape paintings, 'Dunfermline from the North-West'. Painted in 1860, the work is in the collection of the Andrew Carnegie Birthplace Museum. The painting

shows the town from the perspective of Berrylaw Hill. When standing at that vantage point you can see almost the exact same view that he captured in the work. To find out about painting please visit : www.carnegiebirthplace.com

We have made a film 'Walking in the town as if you were wandering in landscape' so you can experience the walk if you are unable to go out. Featuring Alan, Harris & Lenny Grieve. Filmed by @bashartcreative and Beautiful Materials Design Studio as the Creative Producer.

This book is designed by Nicola Atkinson & Alan Grieve, with the drawings by Alan Grieve.



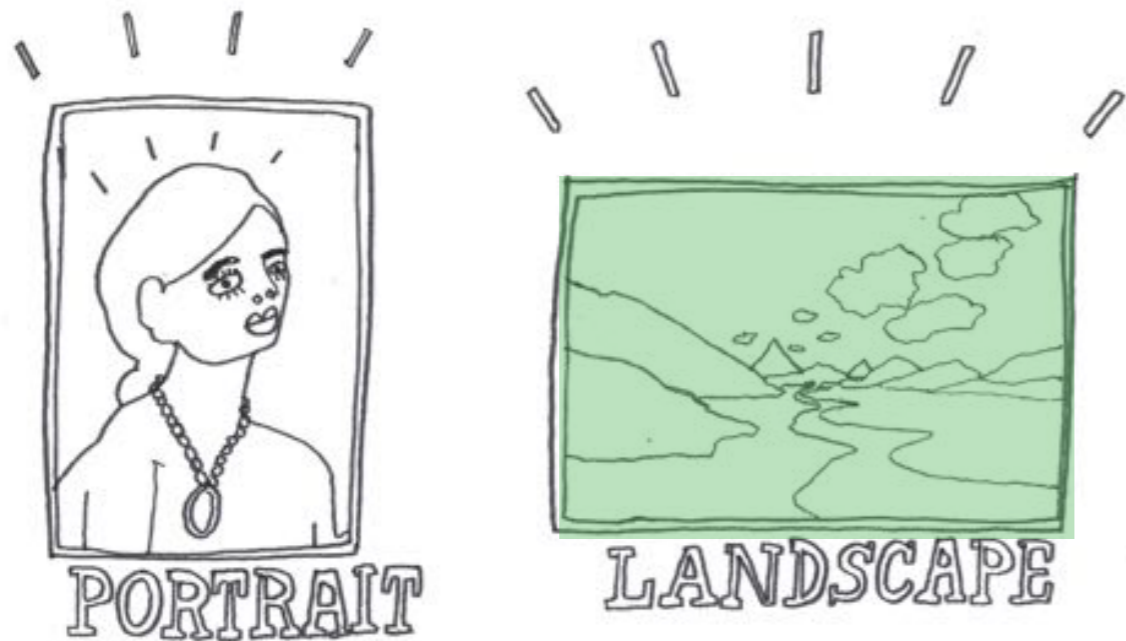
@beautiful.material @godunfermline
@HeritageFundSCO @carnegiemuseum
@glamcandyuk @SustransScot @CRTWorx
@workspacedunferline @jimpaynephotos

WHAT IT LOOKS LIKE ON THE TOP OF BERRYLAW HILL IN 1860



WHAT IT LOOKS LIKE ON THE TOP OF BERRYLAW HILL NOW

POSITION YOUR PAPER TO LANDSCAPE



HOW TO POSITION YOUR PAPER

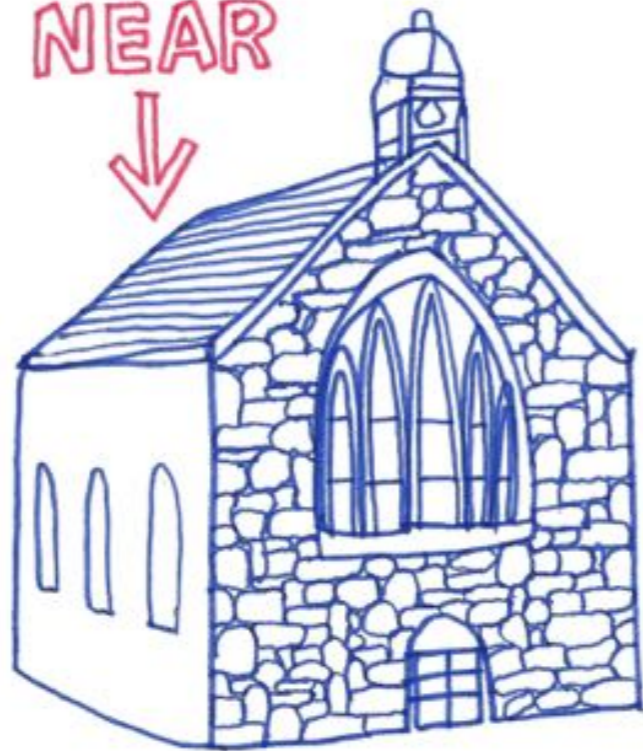
HORIZON LINE IN THE MIDDLE OF YOUR PAPER



DRAW MORE DETAILS WHEN OBJECTS ARE NEAR



NEAR
↓



BUILDINGS YOU FIND IN THE LANDSCAPE

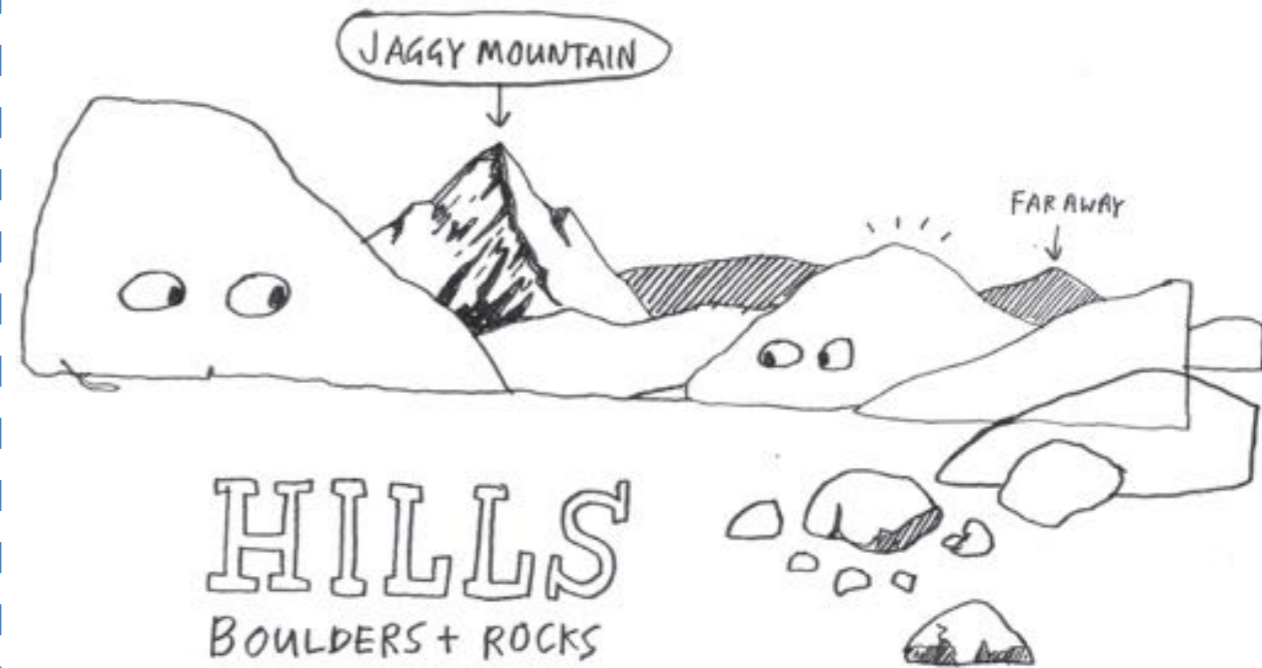


PEOPLE YOU MIGHT FIND IN THE LANDSCAPE



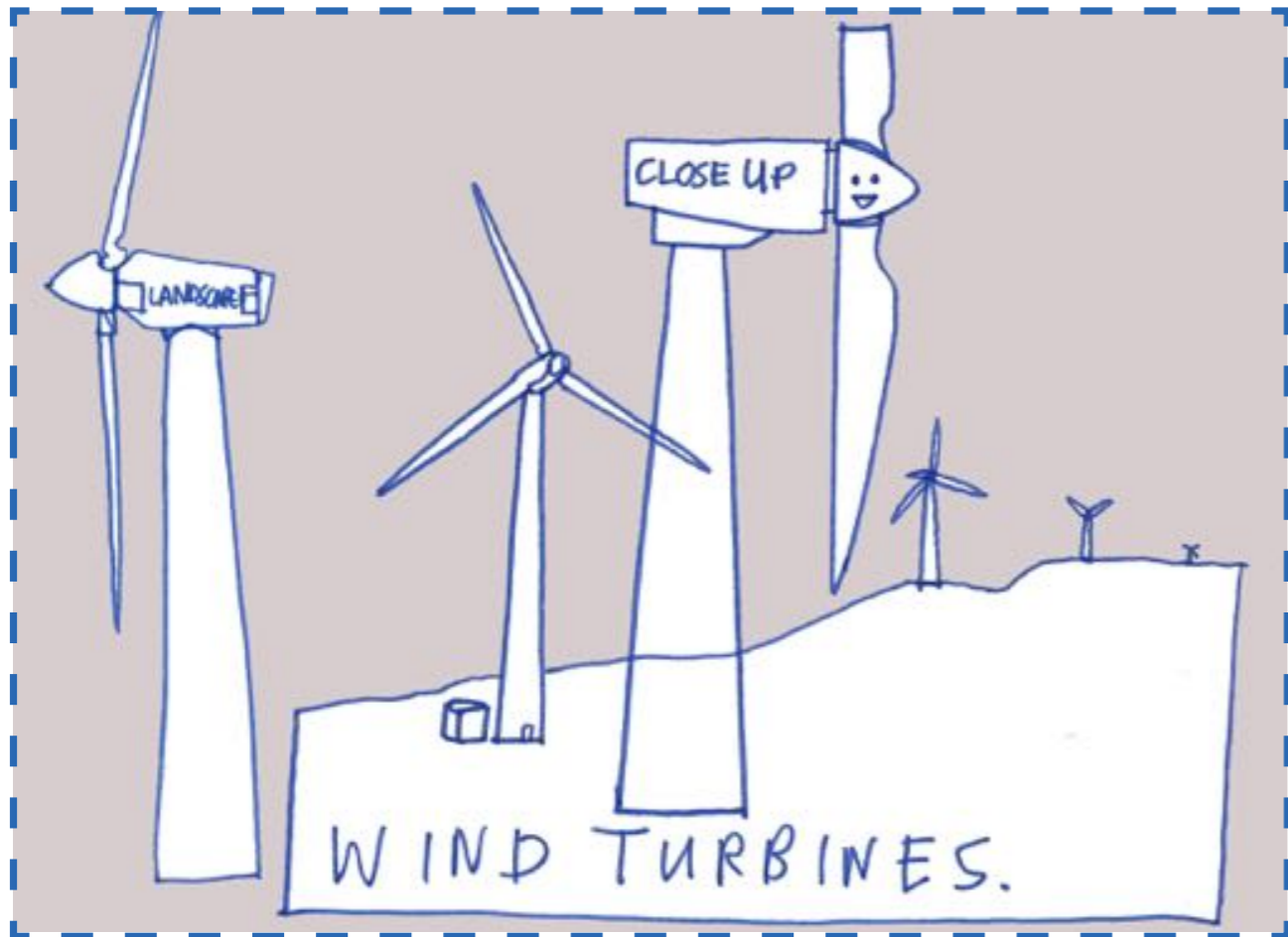
PEOPLE
NEAR and FAR AWAY

HILLS & MOUNTAINS YOU FIND IN THE LANDSCAPE

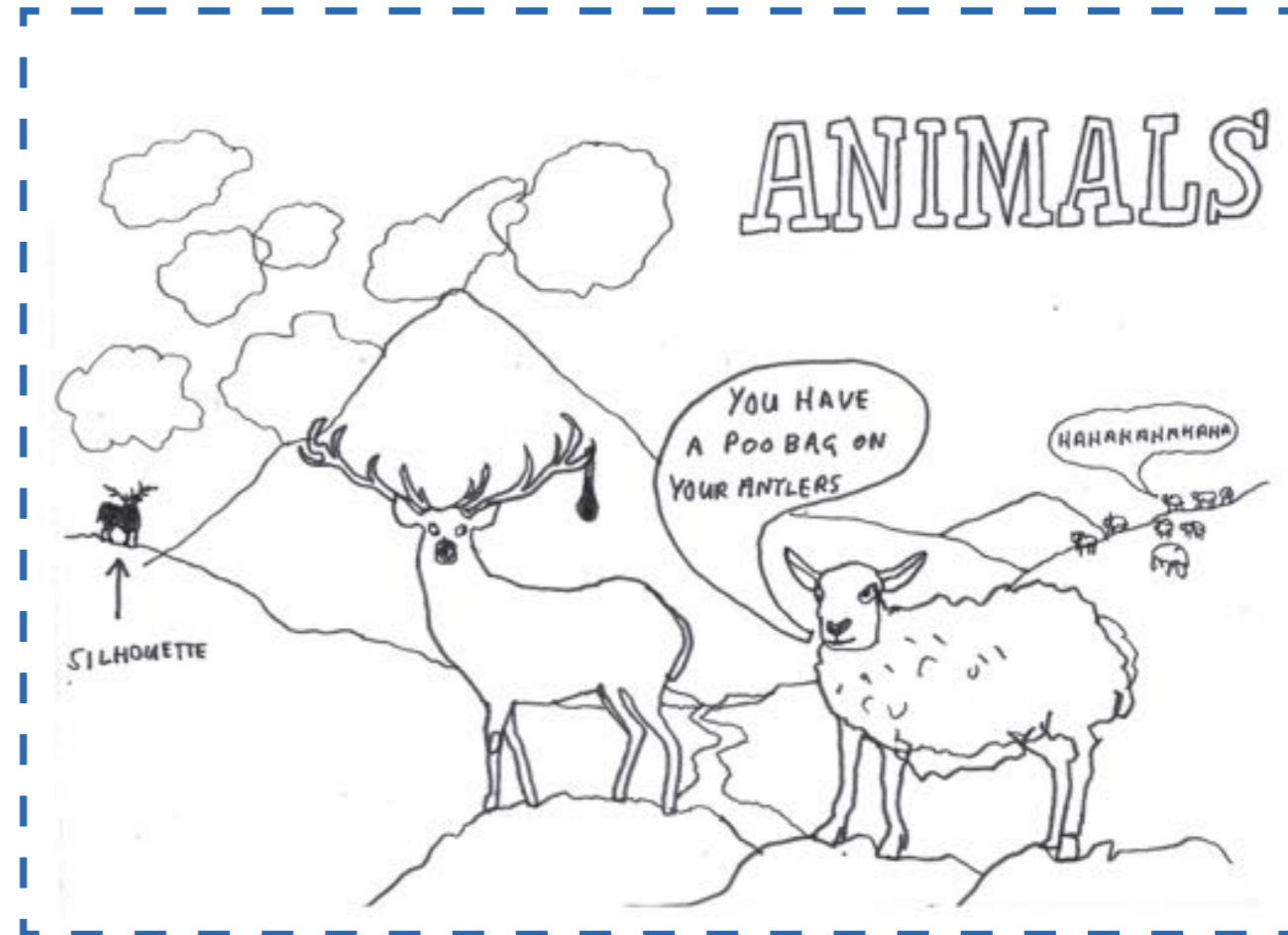


HILLS
BOULDERS + ROCKS

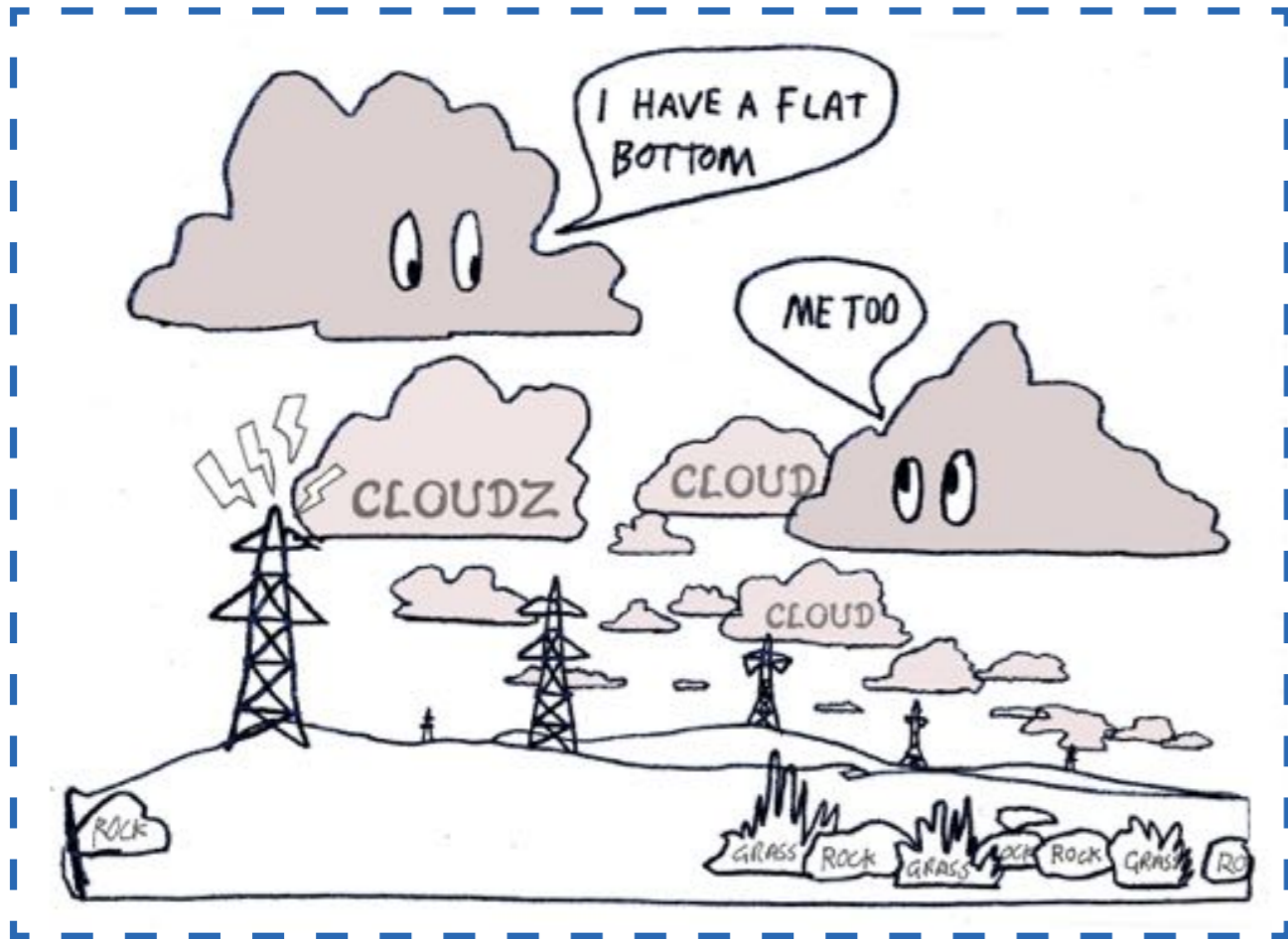
WINDTURBINES YOU FIND IN THE LANDSCAPE



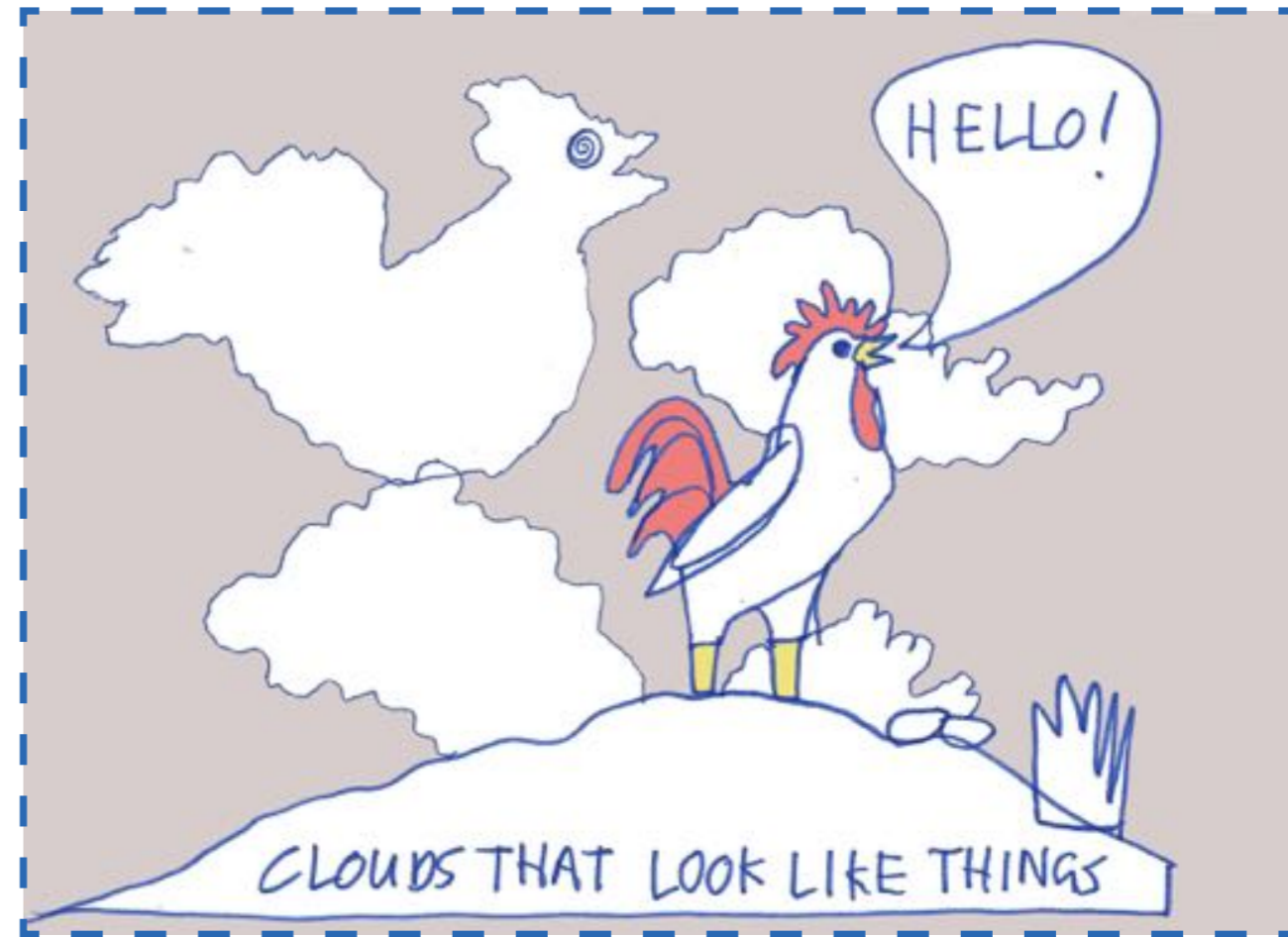
ANIMALS YOU FIND IN THE LANDSCAPE



SOME CLOUDS YOU FIND IN THE LANDSCAPE

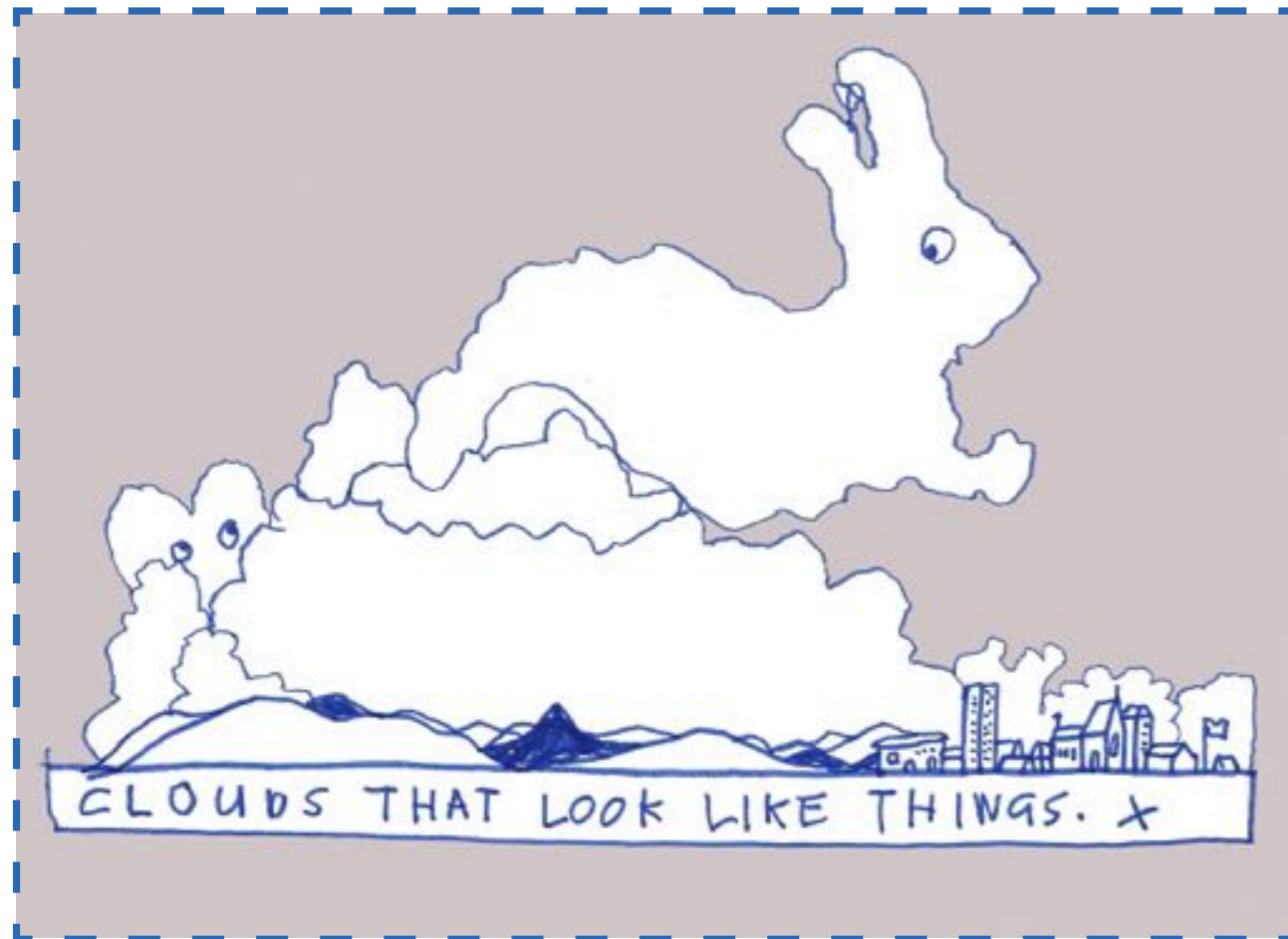


WHAT CAN YOU SEE WHEN YOU LOOK UP?

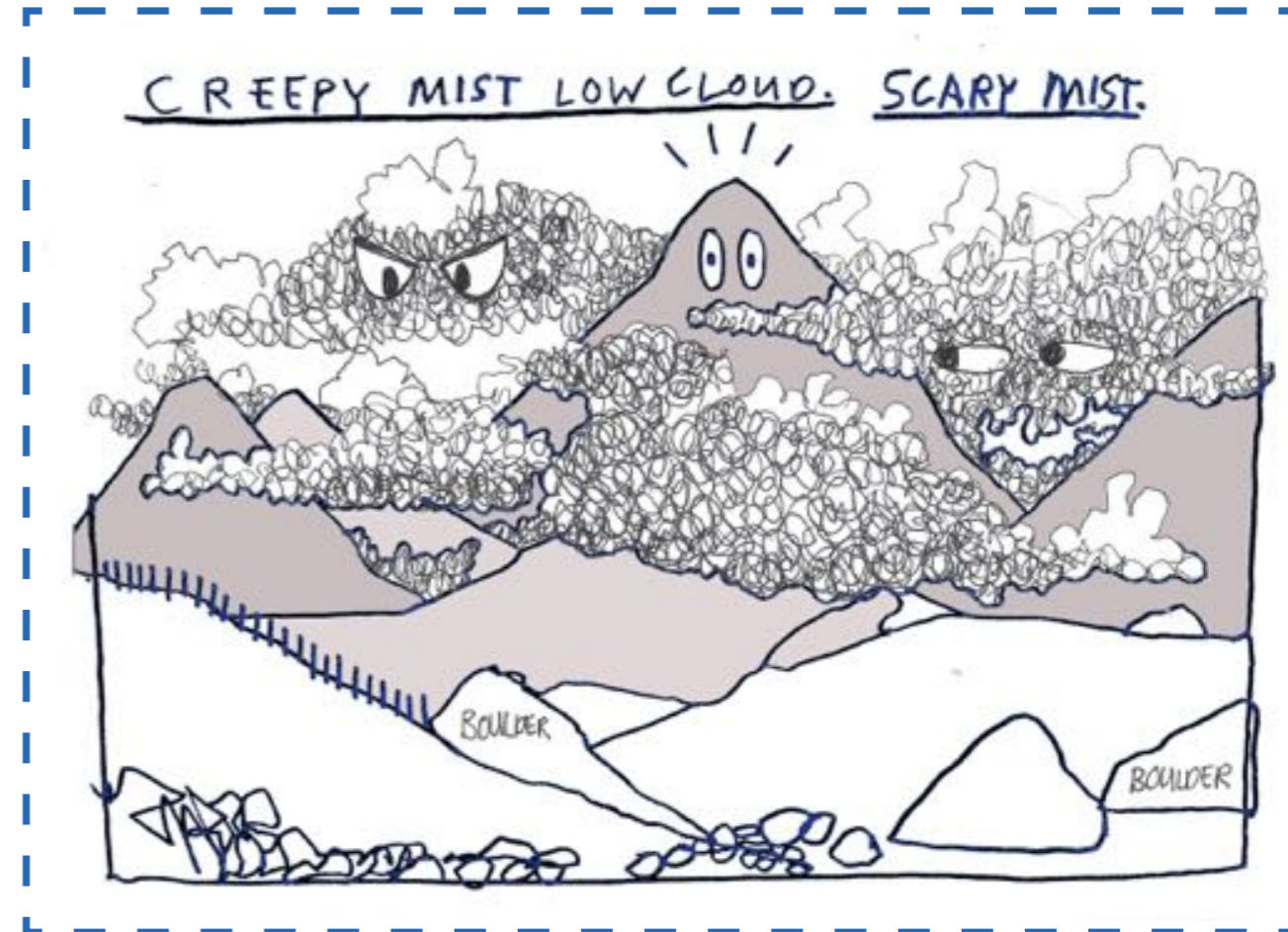


CLOUDS THAT LOOK LIKE THINGS

AWW! LOOK! A FUFFY BUNNY!



NOT ALL CLOUDS ARE WHITE & FUFFY!



NOW YOU ARE READY TO DRAWING IN NATURE

YOUR (ARTIST) CHECK LIST

1ST CHECK THE WEATHER.

GOOD IDEA TO WEAR CLOTHES THAT KEPT YOU DRY, WARM AND COMFORTABLE WHEN SITTING AND OR STANDING.

BRING WATER TO DRINK & A LIGHT SNACK TO EAT.

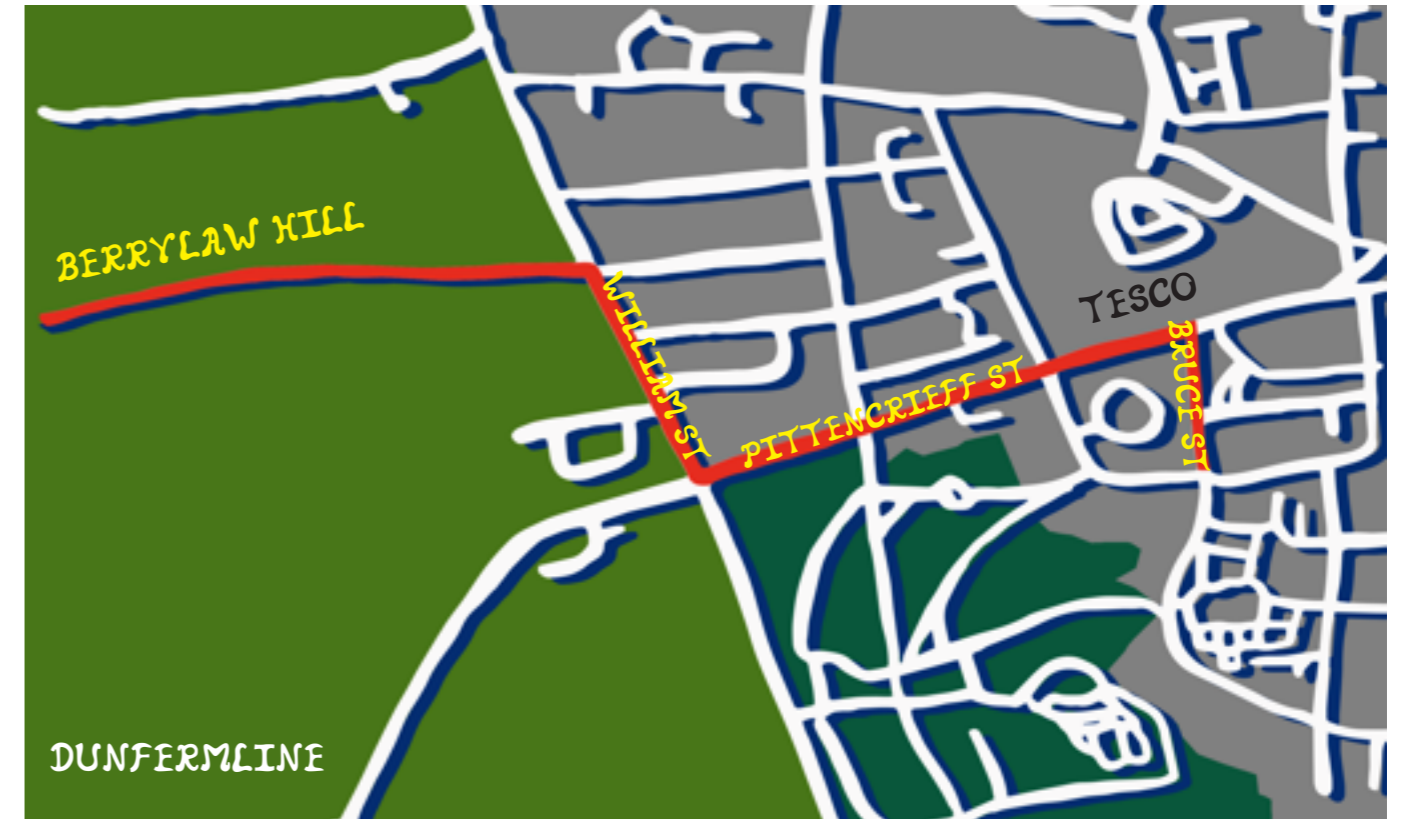
ART SUPPLIES: A BOARD TO HOLD YOUR PAPER/CANVAS ON,
PENCILS, COLOUR MARKERS ETC

AS YOU VENTURE ON A WALK UP TO BERRYLAW HILL, DUNFERMLINE.
PLEASE BE RESPECTFUL OF THE SHEEP AND THE WILD STOCK.

ONCE COMPLETE PLEASE SEND YOUR SUBMISSIONS VIA EMAIL OR MAIL
A4 LANDSCAPE ONLY - 297MM W X 210MM H
WORKSPACEDUNFERMLINE@YAHOO.COM (300 DPI AND LIMITED TO 20MB)

BEAUTIFUL MATERIALS DESIGN STUDIO
FLAT 2/2, 56 BALLINDALLOCH DRIVE GLASGOW, G31 3DN

THE MAP HOW TO GET THERE



9 BRUCE STREET TO BERRYLAW HILL IS A 25 MINUTE WALK



